

Ocharaku Sound Customize new product information

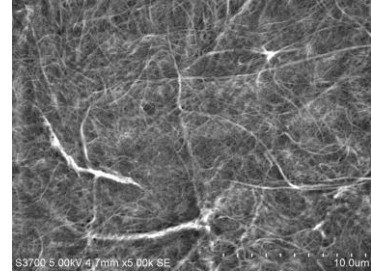
release date and information

“Flat4-KAEDE III” “Flat4-AKAKAEDE III” “Flat4-KAEDE III Balance” “Flat4-AKA KAEDE III Balance

The latest collaboration of Oak village's timber craftsmanship and Ocharaku's finest sound engineering. 4 models

total of 200set+ limited production. Flat4-KAEDE III & AKAKAEDE III are design to achieve both; a natural sound expansion and playing the slightest tweet sound.

Using CNF(Cellulose Nanofibers) for Hybrid Diaphragm; CNF is a basic skeleton material of all plants and it weights 1/5 of but 5 times stronger than a steel, with a low Q, thus less unnecessary resonance therefore a ideal material for diaphragm. Achieving an expending special sound on both high and low frequency.



CNF micro graph Provided by:
Shizuoka Prefecture Industrial
Technology Institute

Technical cooperation: Shizuoka Prefecture Industrial Technology Research Institute, MK Tech Co., Ltd. (Yaizu City, Shizuoka Prefecture)

The center cabinet is wiped lacquer finish with maple material creates a comfortable reverberation; adding groove inside the cabinet to further reduce the standing wave and pursued sound with more spread. In addition, we applied lacquer to the phase correction tube (Flat 4 - KAEDE III black lacquer, Flat 4 - AKAKAEDE III red lacquer,) to harmonize the sound of all the parts.

Each are carefully selected and finished by hands of Hida Takayama craftsmen.

Flat4-KAEDE III, Flat4-AKAKAEDE III with a Φ3.5mm mini plug,

Flat4-KAEDE III Balance, Flat4-AKAKAEDE III Balance with Φ4.4mm 5-pole plug

Flat4-KAEDE III, Flat4-AKAKAEDE III 2019' April 5th on sale

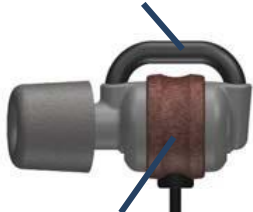
open price Ocharaku Sound Customize sealing price 100,000 yen (excluding tax) 108,000 yen (tax included)

Flat4-KAEDE III Balance, Flat4-AKAKAEDE III Balance built-to-order late April onwards

open price Ocharaku Sound Customize sealing price 110,000 yen (excluding tax) 118,000 yen (tax included)

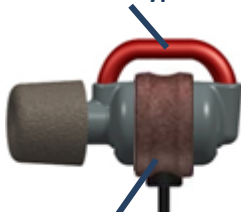
In store at Fujiya-avic, e earphone, GINZA YAMANO MUSIC, YODOBASHI CAMERA(limited branches), Oak village and Sound Customize shop

Lacquer coated Phase correction tube
28mm standard length type

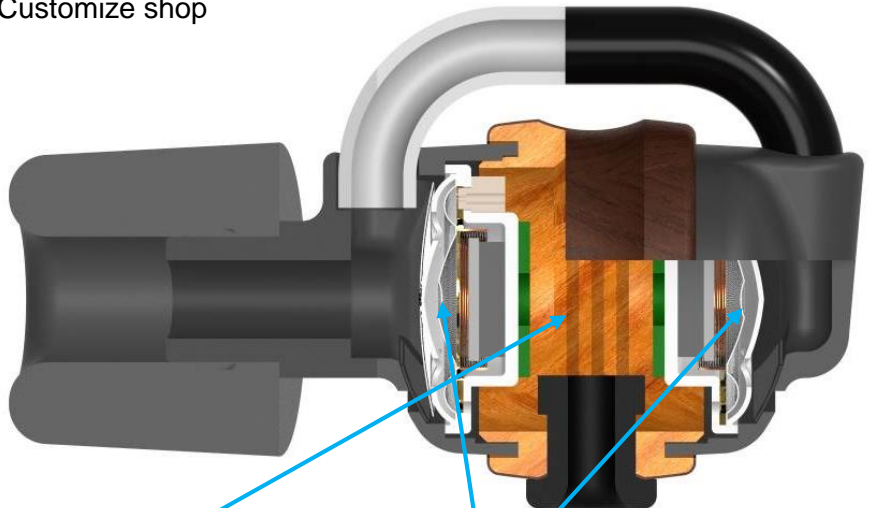


Lacquer coated Maple timber
center cabinet

Lacquer coated Phase correction tube
30mm extended type



Lacquer coated Maple timber
center cabinet



Add grooving inside cabinet
for sound adjustment

CNF hybrid diaphragm

for a better super high frequency



Flat4-KAEDE III Balance, Flat4-AKAKAEDE III Balance

Nippon DICS's Gold plated non-oxidized copper
Φ4.4mm 5-pole premium cable

Raw lacquer; one of the most ideal natural over coat; exceptionally solidify the applied wood than any chemical over coats. Over time, by exposure to sun (UV) light, lacquer coat increases its translucent level thus the timber grain starts to be more and more visible. Both sound and visual of this product will age uniquely and specifically only in your way.

Phase correction tube is adopted for Acoustic circuit, designed to suppress sound deterioration factor caused by occluded ear canal; vibration around 6kHz. Sound quality could be improved by selecting suitable length type matching to individuals ear canal length. Flat4-KAEDE III, for a standers ear canal length and Flat4-AKAKAEDE III for longer ear canal length.



Full-range 2-element 4-way effect Canal type headphone
Deepest bass beyond Closed dynamic type / spatial sound expansion just like Open air type
Twin-Equalize-Element system
Patented No.4953490 (JPN) US Pat. No.8660288 Euro Pat. No.2595408

- 1st effect: the face-to-faced element cancel out unwanted occurring vibration by “counter-vibration” to maximize deepest bass beyond Closed dynamic types
- 2nd effect: by driving two elements simultaneously increases sound pressure sensitivity from low to mid sound register
- 3rd effect: Phase correction tube eliminates occluded ear canal resonate vibration and significantly improve middle to higher register
- 4th effect: Minimizing acoustic resistance and adopting smaller element to drastically enhance the highest register creating sound expansion of Open air type

Comparison table

	Flat4-KAEDE III, AKAKAEDE III NEW!	Flat4-KAEDE III Balance, AKAKAEDE III Balance NEW!	Flat4-KAEDE Type , AKAKAEDE Type II
Phase correction tube	Black and Red lacquer coat	Black and Red lacquer coat	Anti vibration coat
Center cabinet	Solid Maple wood coated with raw lacquer	Solid Maple wood coated with raw lacquer	Solid Maple wood coated with raw lacquer
Element	010e007 (new) CNF hybrid diaphragm	010e007 (new) CNF hybrid diaphragm	010e002
Cable with plug	3-pole stereo mini plug, *quadruple conductor cable (cable brunch point to plug)	Φ4.4mm 5-pole plug, *quadruple conductor cable (cable brunch point to plug)	3-pole stereo mini plug, *quadruple conductor cable (cable brunch point to plug)
Sound adjust by;	Sound check by Comply and Final E type	Sound check by Comply and Final E type	Sound check by Comply and SpinFit

Technical data

Common

Element	010e007 CNF hybrid diaphragm Φ 10mm Dynamic type x2 (On one side)
Acoustic system	Twin-Equalizer system
Output Sound Pressure Level	104dB SPL/mW
Frequency	3.5~45kHz (High-resolution compatible)
Max Input	400mW
Impedance	18 Ω

Flat4-KAEDE III, Flat4-AKAKAEDE III

Mass	Approx. 17g
Plug	Φ 3.5mm Gold plated stereo mini plug
Cable Length	1.2m (Y type)
Accessory	Comply foam ear tips T-200 L size (M size on product) Silicon ear tips Final E type SS, S, M, L, LL size L type cable adapter, Wooden casing (Maple & paulownia solid wood), Cleaning cloth, Manual instruction/warranty card

Flat4-KAEDE III Balance, Flat4-AKAKAEDE III Balance

Mass	Approx. 21g
Plug	Φ 4.4mm 5-pole plug
Cable Length	1.2m (Y type)
Accessory	Comply foam ear tips T-200 L size (M size on product) Silicon ear tips Final E type SS, S, M, L, LL size Wooden casing (Maple & paulownia solid wood), Cleaning cloth, Manual instruction/warranty card

Other features

- Quadruple conductor cable with plug for more distinguish sound character for each side
- Compatible to high-resolution sound source: Covering from 3.5 to 45kHz
- Minimizes touch noise: Flat4 structure and Comply foam ear tips
- Improving high frequency performance: Final type E; silicon ear tips
- Clean middle to high register with less distortion: Tangential-less Diaphragm
- Sustainable to high input up to 400mW: Specific CCAW lines used for voice coils
- Powerful magnetic circuits configuration: Maximum Energy Product of 400kJ/m³(50MGOe) Neodymium magnet combined with electromagnetic PURE iron plates and yoke
- Non fading indications: All indications are laser marked; chipping off and/or discoloration will not occur

JAN code

Flat4-KAEDE THREE	: 4573363670204
Flat4-AKAKAEDE THREE	: 4573363670211
Flat4-KAEDE THREE Balance	: 4573363670228
Flat4-AKAKAEDE THREE Balance	: 4573363670235